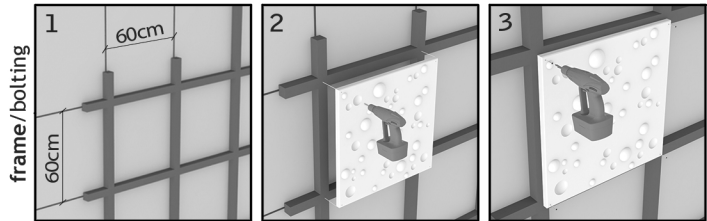
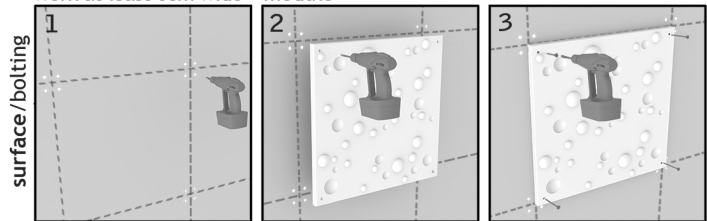


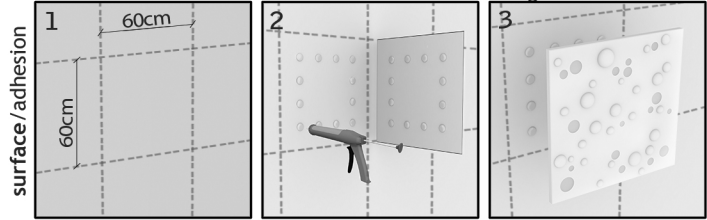
Installation instructions



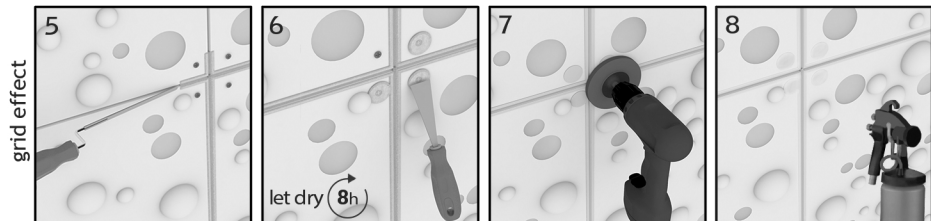
1 install a 60*60cm frame-work at least 6cm wide
2 drill holes to the module
3 place suitable screws



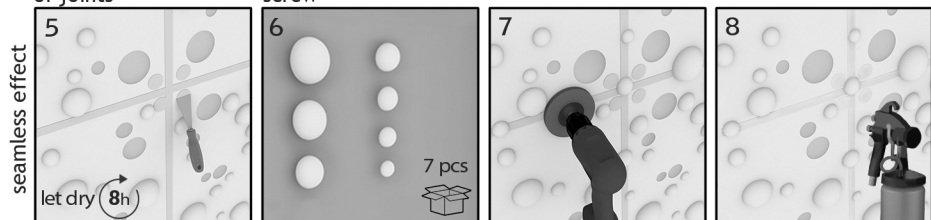
1 draw a 60*60cm grid/drill holes
2 drill holes to the module
3 place the module by using suitable screws



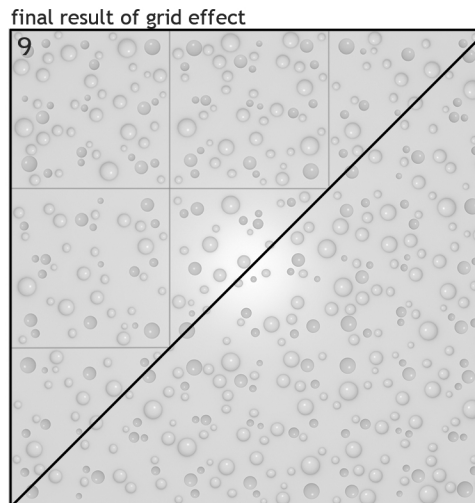
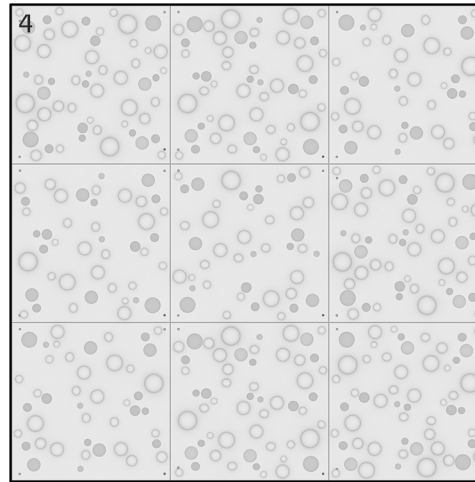
1 draw a 60*60cm grid
2 apply adhesive material on surface and module
3 place the module on the grid



5 apply joint filler to gaps of joints*
6 apply joint filler to each screw
7 smooth by sanding
8 apply primer and paint



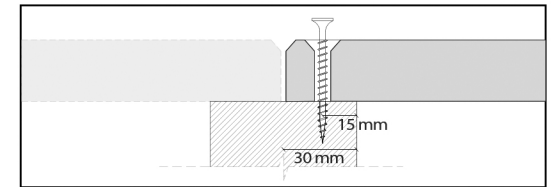
5 apply joint filler to gaps of joints and screws**
6 seamless effect kit 7 pcs
7 smooth by sanding
8 apply primer and paint



Follow the steps 1-9 depending on the selected mounting method and the desired final result.

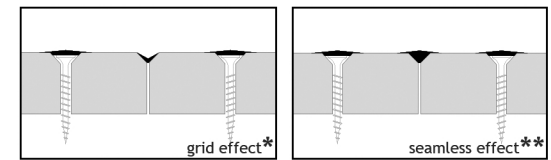
Bolting method:

- Use appropriate screws depending on the material of the framework or the surface (step: 2).
- When applied on surfaces made of concrete or brick masonry, use Upat instead of screws.
- Drill holes to the product in the desired positions according to the picture below.

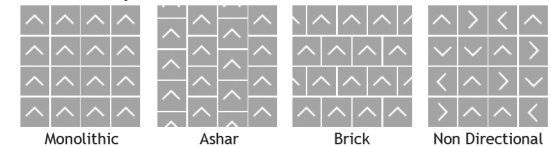


Adhesion method:

- Make sure all surfaces are clean and free of dust.
- Apply suitable material for joining plaster with the selected surface (step: 2).
- Temporary support of the product is required until the adhesive material sets.
- The product is recommended to be installed by specialised craftsmen in the sector of plastering, with suitable joint fillers (steps: 2,3,4,5,6).
- The product is recommended to be painted by specialised craftsmen in the coloring sector.
- For optimum final finish use spray painting (steps: 7,8).
- These installation instructions apply to all similar 60x60 NAMA 3d Surfaces.



Indicative possible combinations:



thank you for choosing this product

Copyright © 2016-2018 NamaModular. All rights reserved

www.namamodular.com