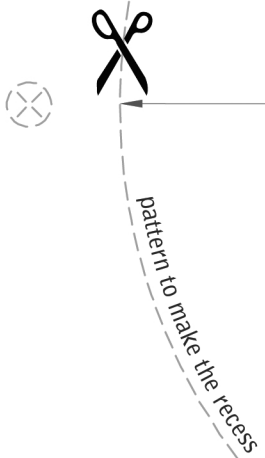


ceiling 



D157

Recessed Spotlight
Fos 19 code: 01.A.019

Finishes 
Natural Plaster Finish

Dimensions / Weight
D154x45mm / 600g/pc

Lamp Holder
GU10 (included)

Lamp type / Max consumption / Voltage
MR16 Led or Halogen / 50Watt / 220-240V (not included)
note: This recessed spotlight can also be used with GU 5.3 / MR16 / 12V

Features



Fos 19 code: 01.A.019

Copyright © 2016 NamaModular. All rights reserved